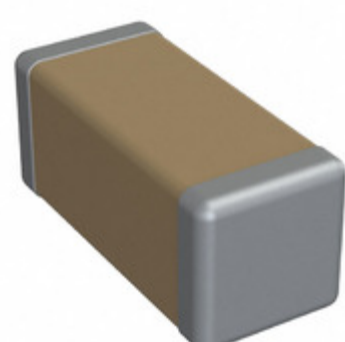


1808Y0100561JCR



Part Number: 1808Y0100561JCR
Manufacturer: Knowles Syfer
Description: CAP CER 560PF 10V C0G/NP0 1808
Data sheet: [MLCC Capacitor Datasheet](#)
[MLCC Catalog](#)

RoHS Status: Lead free / RoHS Compliant
Ship From: Hong Kong
Shipment Way: DHL/Fedex/TNT/UPS/EMS

Images are for reference only.
 See Product Specifications for product details.
 Buy 1808Y0100561JCR with confidence from
 Component-World.HK, 1 Year Warranty

[Request For Quotation](#)

PRODUCT PARAMETER

Part Number	1808Y0100561JCR	Manufacturer	Knowles Syfer
Description	CAP CER 560PF 10V C0G/NP0 1808	Lead Free Status / RoHS Status	Lead free / RoHS Compliant
Quantity Available	195808 pcs	Data sheet	MLCC Capacitor Datasheet MLCC Catalog
Category	Capacitors	Voltage - Rated	10V
Tolerance	±5%	Thickness (Max)	0.079" (2.00mm)
Temperature Coefficient	C0G, NP0 (1B)	Size / Dimension	0.177" L x 0.079" W (4.50mm x 2.00mm)
Series	FlexiCap™	Ratings	-
Packaging	Tape & Reel (TR)	Package / Case	1808 (4520 Metric)
Operating Temperature	-55°C ~ 125°C	Mounting Type	Surface Mount, MLCC
Moisture Sensitivity Level (MSL)	1 (Unlimited)	Manufacturer Standard Lead Time	8 Weeks
Lead Style	-	Lead Spacing	-
Lead Free Status / RoHS Status	Lead free / RoHS Compliant	Height - Seated (Max)	-
Features	Soft Termination	Failure Rate	-
Detailed Description	560pF ±5% 10V Ceramic Capacitor C0G, NP0 (1B) 1808 (4520 Metric)	Capacitance	560pF
Applications	Boardflex Sensitive		

Component-World.com is a Reliable Stocking Distributor of Electronic Components. We specialize in all Knowles Syfer series electronic components. We have 195808 pieces of Knowles Syfer 1808Y0100561JCR in stock available now. Request a quote from electronics components distributor at Component-World.com, our sales team will contact you within 24 hours.
 RFQ Email: info@Components-World.com

RELATED PRODUCTS

	Part#: 1808Y0100561KCR Description: CAP CER 560PF 10V C0G/NP0 1808	Manufacturers: Knowles Syfer	RFQ
	Part#: 1808Y0100561JCT Description: CAP CER 560PF 10V C0G/NP0 1808	Manufacturers: Knowles Syfer	RFQ
	Part#: 1808Y0100561GCR Description: CAP CER 1808	Manufacturers: Knowles Syfer	RFQ
	Part#: 1808Y0100561KXT Description: CAP CER 560PF 10V X7R 1808	Manufacturers: Knowles Syfer	RFQ
	Part#: 1808Y0100560KCT Description: CAP CER 56PF 10V C0G/NP0 1808	Manufacturers: Knowles Syfer	RFQ
	Part#: 1808Y0100561FCR Description: CAP CER 560PF 10V C0G/NP0 1808	Manufacturers: Knowles Syfer	RFQ
	Part#: 1808Y0100561KCT Description: CAP CER 560PF 10V C0G/NP0 1808	Manufacturers: Knowles Syfer	RFQ
	Part#: 1808Y0100562FCR Description: CAP CER 5600PF 10V C0G/NP0 1808	Manufacturers: Knowles Syfer	RFQ
	Part#: 1808Y0100560KCR Description: CAP CER 56PF 10V C0G/NP0 1808	Manufacturers: Knowles Syfer	RFQ
	Part#: 1808Y0100561MXT Description: CAP CER 560PF 10V X7R 1808	Manufacturers: Knowles Syfer	RFQ
	Part#: 1808Y0100561KXR Description: CAP CER 560PF 10V X7R 1808	Manufacturers: Knowles Syfer	RFQ
	Part#: 1808Y0100561JXR Description: CAP CER 560PF 10V X7R 1808	Manufacturers: Knowles Syfer	RFQ
	Part#: 1808Y0100560GCR Description: CAP CER 56PF 10V C0G/NP0 1808	Manufacturers: Knowles Syfer	RFQ
	Part#: 1808Y0100561JXT Description: CAP CER 560PF 10V X7R 1808	Manufacturers: Knowles Syfer	RFQ
	Part#: 1808Y0100561MXR Description: CAP CER 560PF 10V X7R 1808	Manufacturers: Knowles Syfer	RFQ
	Part#: 1808Y0100561GCT Description: CAP CER 560PF 10V C0G/NP0 1808	Manufacturers: Knowles Syfer	RFQ
	Part#: 1808Y0100560GCT Description: CAP CER 56PF 10V C0G/NP0 1808	Manufacturers: Knowles Syfer	RFQ
	Part#: 1808Y0100561FCT Description: CAP CER 560PF 10V C0G/NP0 1808	Manufacturers: Knowles Syfer	RFQ
	Part#: 1808Y0100560JCT Description: CAP CER 56PF 10V C0G/NP0 1808	Manufacturers: Knowles Syfer	RFQ
	Part#: 1808Y0100560JCR Description: CAP CER 56PF 10V C0G/NP0 1808	Manufacturers: Knowles Syfer	RFQ

Related keywords for 1808Y0100561JCR

Knowles Syfer 1808Y0100561JCR	1808Y0100561JCR distributor	1808Y0100561JCR supplier	1808Y0100561JCR price
1808Y0100561JCR download datasheet	1808Y0100561JCR datasheet	1808Y0100561JCR stock	buy 1808Y0100561JCR
Knowles Syfer 1808Y0100561JCR	Syfer 1808Y0100561JCR		